

NU-TRALIZE

Salt & Chloride Neutralizing Wash

NU-TRALIZE is a salt and chloride neutralizing wash that prevents rust and corrosion from forming on expensive de-icing equipment. NU-TRALIZE quickly neutralizes and breaks up the corrosive “white salt film” that forms on machinery used in the distribution of ice-melting salts, extending the service life of this equipment.

- ✓ **Neutralizes Salt and Chloride Ions and Removes White Salt Film From Any Surface, Including Spreaders, Trucks and Dump Beds**
- ✓ **Excellent Cleaner and Wash**
- ✓ **Deposits a Corrosion Inhibition Layer on Metal Surfaces Which Can be Further Enhanced by the Use of ATCO's E-Z DOES IT Lubricant/ Penetrant/Protectant**
- ✓ **Extends the Life of Expensive De-Icing Equipment**
- ✓ **Economical Dilution Rate of 1:30 with Water**



...setting performance
standards worldwide...

APPLICATIONS

NU-TRALIZE salt and chloride neutralizing wash is highly effective at neutralizing the corrosive white salt film and chloride ions which create rust and corrosion on metal surfaces of exposed de-icing equipment, therefore extending the service life of this machinery.

- NU-TRALIZE neutralizes salt and chloride ions and removes the corrosive white salt film from any surface
- NU-TRALIZE is an excellent cleaner and wash
- NU-TRALIZE deposits a corrosion inhibition layer on metal surfaces which can be further enhanced by the use of ATCO's E-Z DOES IT lubricant/penetrant/protectant. E-Z DOES IT can be applied directly after the equipment is dry to provide an added layer of protection that prevents rust and corrosion from forming.

DIRECTIONS

Dilution Rate: 1:30 of NU-TRALIZE with cold water.

Simply apply a diluted solution of NU-TRALIZE with a pressure washer and rinse the product off with cold water.

If a pressure washer is not available, apply a diluted solution of NU-TRALIZE by any means that will provide a uniform spray over the surface to be treated. Let the product soak into the surface and then scrub to release salt deposits and to clean. Finally, rinse the surface off with cold water.

When using NU-TRALIZE's companion product E-Z DOES IT after washing the equipment, be sure the equipment is dry before applying the E-Z DOES IT.

TECHNICAL DATA

Specific Gravity:	1.036
pH: (Concentrate)	11.8
(Diluted)	10.5
Density (lbs. per gal.):	8.637
Appearance:	Clear liquid
Odor:	Odorless
Dilution Rate:	1:30

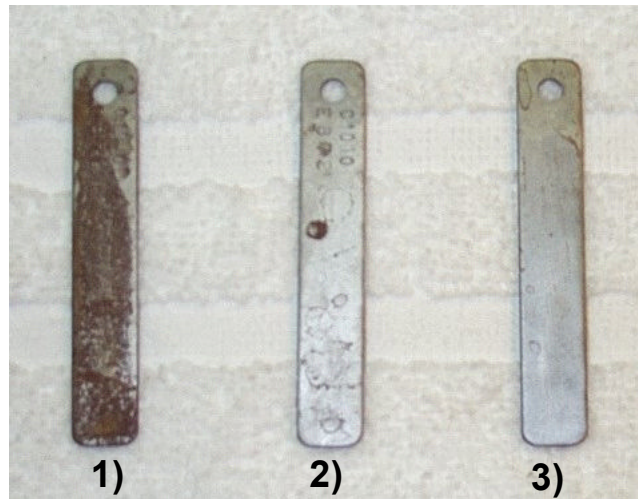


...setting performance
standards worldwide...

C-5/PC-4409/0106

NU-TRALIZE & E-Z DOES IT Salt Corrosion Test

The corrosion tested detailed below was conducted by ATCO's Technical Services Department. The three steel coupons were treated with a saturated solution of salt (sodium chloride) for 24 hours.



- 1) The first coupon was rinsed only with water and left to dry. Corrosion can be observed due to the salt film after a couple of days.
- 2) The second coupon was rinsed with **ATCO's NU-TRALIZE salt and chloride neutralizing wash** and then left to dry. Even though there is just a little oxidation, a considerable difference in the level of corrosion is observed between coupon 1 and 2.
- 3) The third coupon was also rinsed with **NU-TRALIZE**. After it dried, it was treated with **ATCO's E-Z-DOES IT lubricant/penetrant/protectant/water displacer**. The result is basically no corrosion, with filming action that is visible on the metal.